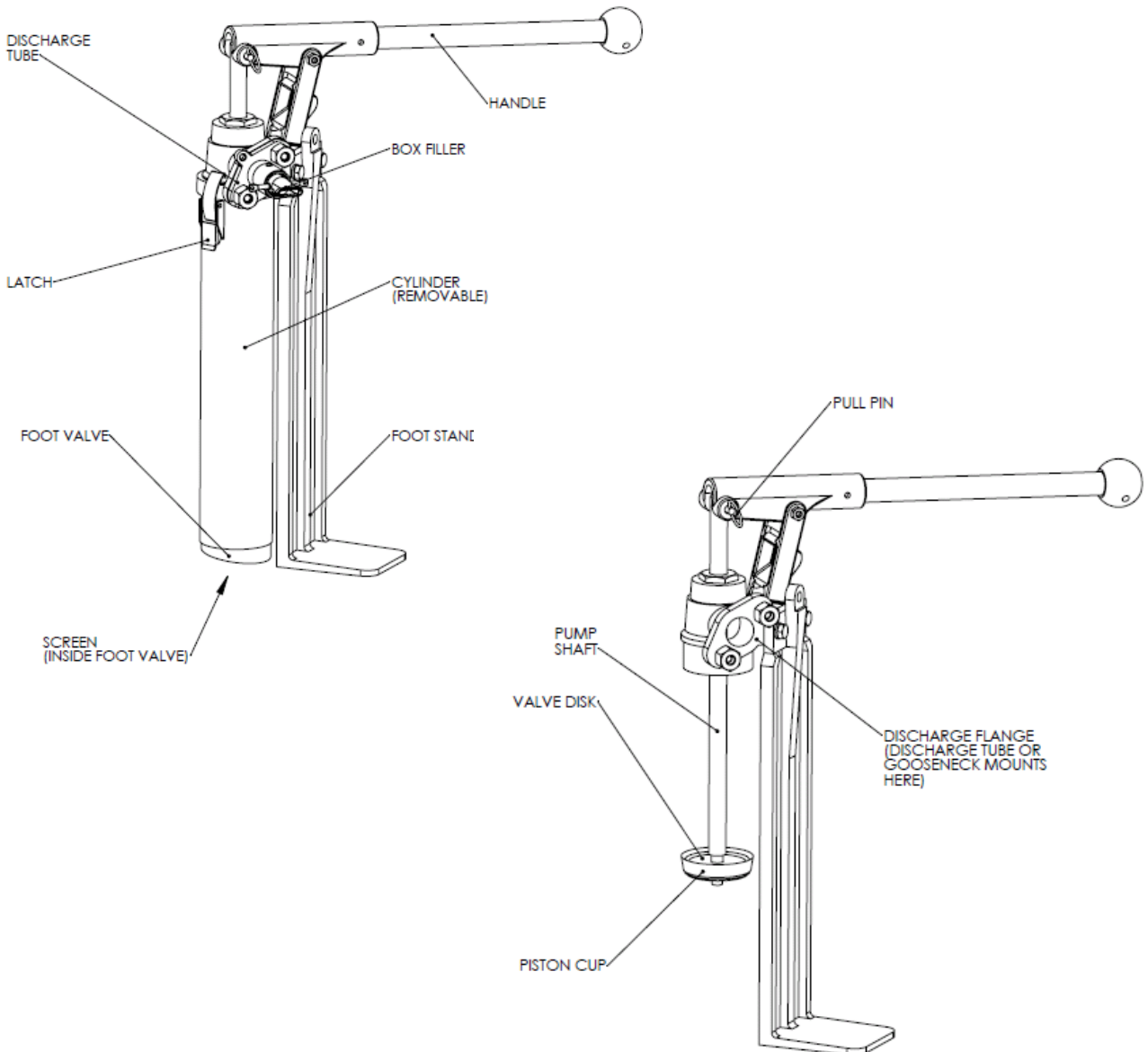


Models: 72TT, 73TT (Pumps) & 90T (Filler)



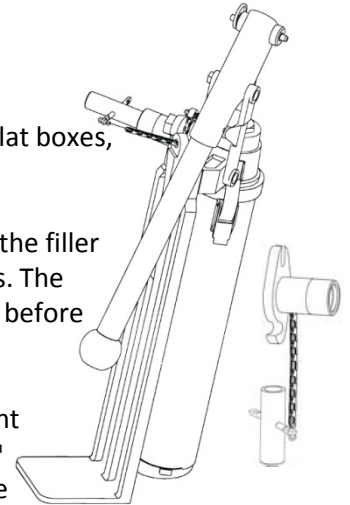
Models: 72TT, 73TT (Pumps) & 90T (Filler)

Operation

With its two nozzles, the EasyClean™ Pump fills nail spotters, automatic tapers, flat boxes, corner applicators and the MudRunner®

The filler attachment is secured to the EasyClean™ Pump by aligning the slots of the filler over the studs on the EasyClean™ Pump housing and tightening the two hex nuts. The gasket (#700049) should be placed between the EasyClean™ Pump and the filler before tightening the nuts to prevent leakage.

Place the EasyClean™ Pump in a standard five gallon bucket, making sure the joint compound is well mixed and free of lumps. A new or freshly cleaned EasyClean™ Pump should be primed before use by pouring 1/2 cup (100 ml) of water into the outlet. Once the EasyClean™ Pump is full of joint compound, no further priming is needed.



Maintenance

The EasyClean™ Pump can be disassembled by disengaging the two clasps at the top of the EasyClean® Pump and pulling the barrel away from the main EasyClean™ Pump body. The plunger can then be removed by disengaging the quick release pin and sliding the plunger through the EasyClean™ Pump housing.

The EasyClean™ Pump can now be cleaned by using a water hose or water and a brush to remove the joint compound from the EasyClean® Pump housing and plunger. Then, after the tool is clean, lightly oil with Ames® Bazooka® Oil or any light machine oil. To keep your EasyClean™ Pump in top working order, you may need to replace the screen, gasket or o-ring on your EasyClean™ Pump. These items should be checked when you clean your EasyClean™ Pump.

Common Wear Parts

Gasket: 700049
Screen (Fine): 700032F
Screen (Coarse): 700033F
O-Rings: 709034

These wear parts are available as a maintenance kit - Model 501H.