



EHWTABLE60 – Hot Wire Cutting Table User Manual



- Please read these instructions carefully before operation
- Take special note of the guidelines and safety prompts in these instructions to avoid injury to yourself, other people and objects, or damage to the tool.

1-844-TT-TOOLS
www.tapetech.com

TapeTech Tools
1327 Northbrook Parkway, Suite 400
Suwanee, GA 30024

EHWTABLE60 – Hot Wire Cutting Table

The TapeTech EHWTABLE60 Hot Wire Cutting Table is a professional-quality portable foam cutting table. The tool quickly and efficiently makes vertical and diagonal cuts in EPS, XPS and other foam materials. The EHWTABLE60 is the perfect combination of robust construction and light weight. The folding legs and removable overhead arm make the table extremely portable. When used with EHCIRCLE60 Circle Cutting Adapter, the table can also be used to cut circles and cylinders in foam.



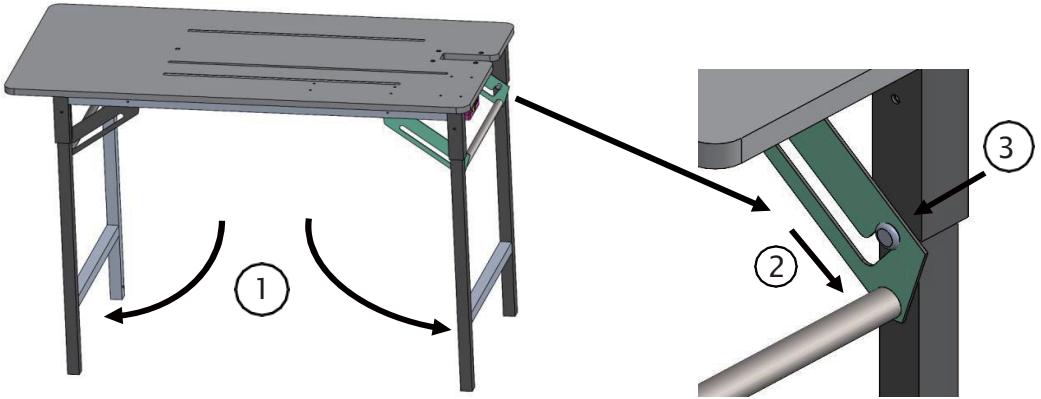
Caution

- A. Always operate the foam cutter in a well ventilated space
- B. Do not touch the wire when working.
- C. Do not overtighten the hot wire.

Product Set Up

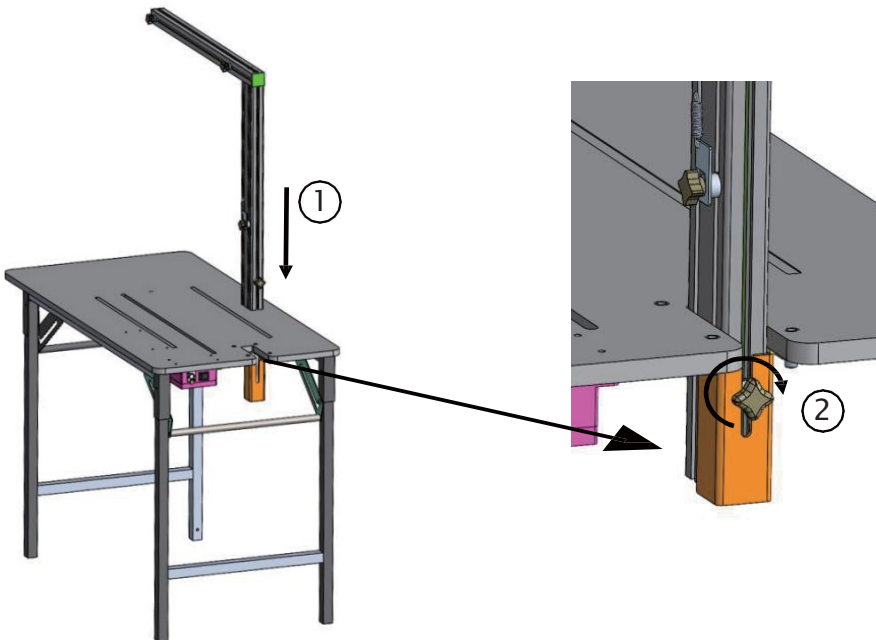
1. Unfold the stand

Unfold the table legs (1). Press the round tubes (2) downward on both sides until the pins (3) are inserted into the slots. This will secure the table legs. To disassemble, simply reverse the steps.



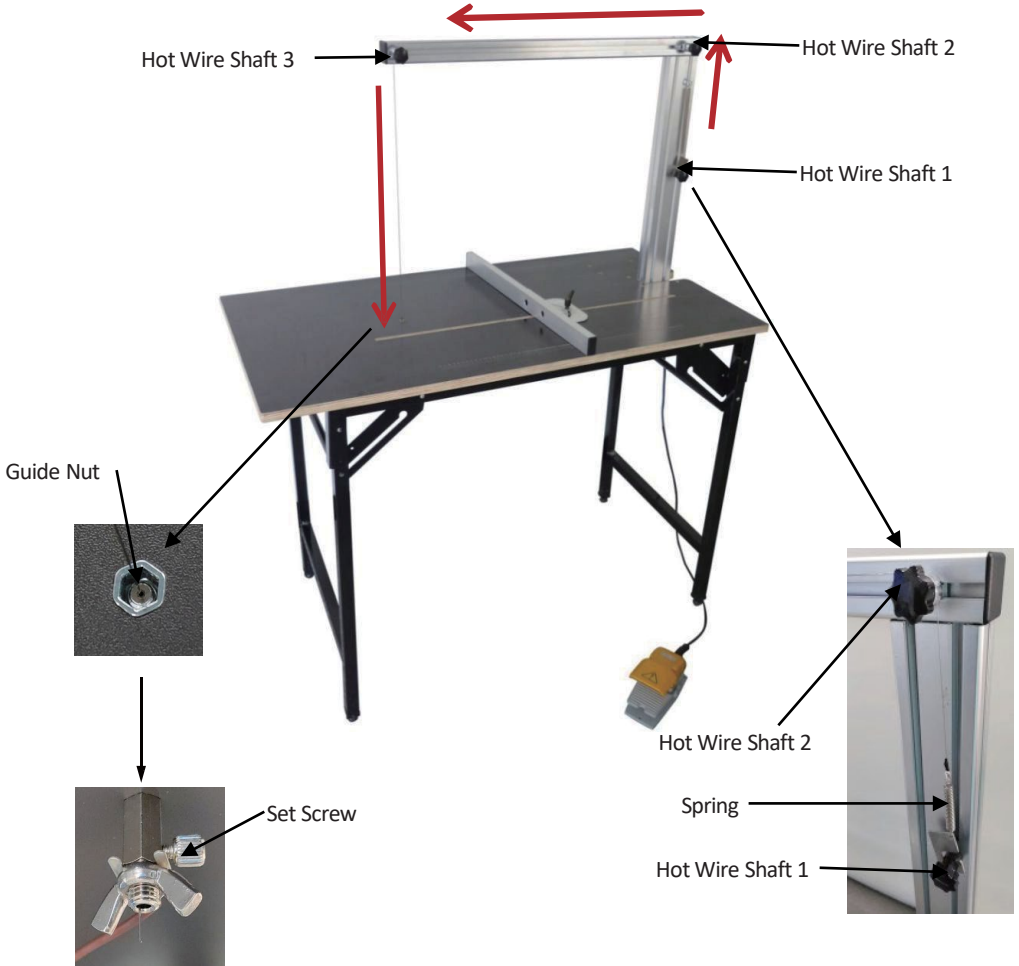
2. Install the Overhead Arm

Insert the L-shaped aluminum overhead arm (1) into the rectangular slot on the tabletop. Tighten the knob (2) to secure the overhead arm to the table.



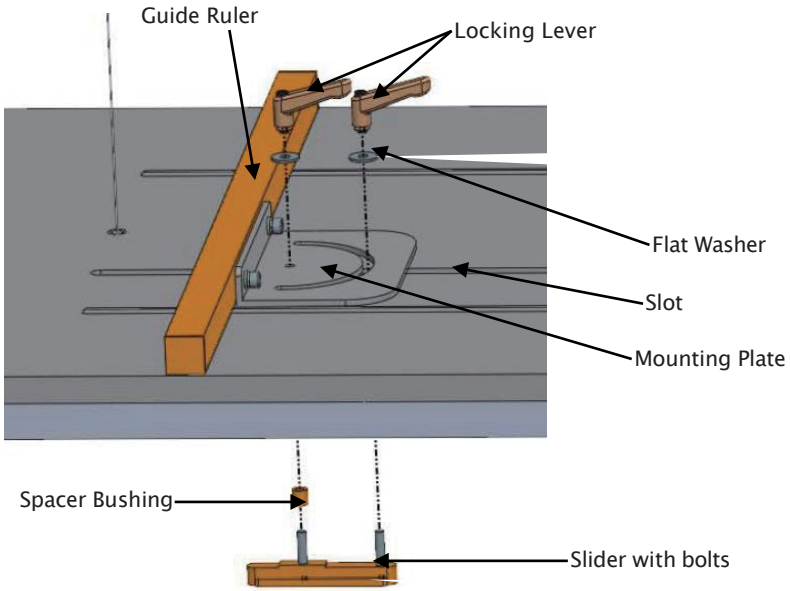
3. Install the Hot Wire

Attach the Hot Wire terminal to the spring at Hot Wire Shaft 1. Wrap the wire counterclockwise over Hot Wire Shaft 2 and Hot Wire Shaft 3. Pass the wire through the guide nut on the table, pull the wire tight and tighten the Set Screw against the Hot Wire. Now, pull down on Hot Wire Shaft 1 to make the Hot Wire taut and tighten the knob.



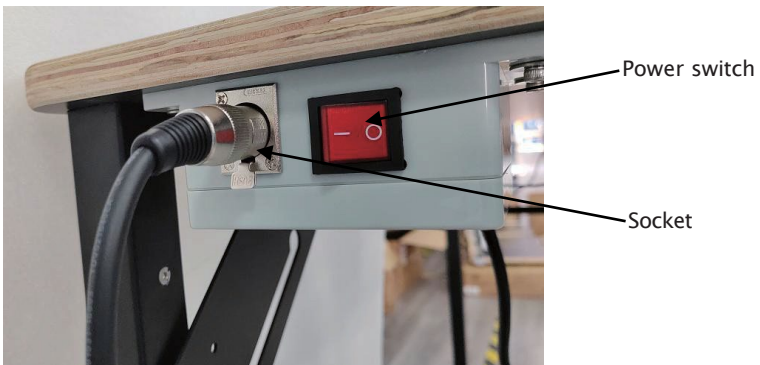
4. Install the Guide Ruler

Set the Guide Ruler on the table and align the hole in the center of the mounting plate with the table slot. Place the Spacer Bushing over the bolt on the Slider. From underneath the table, insert the slider with bolts through the table, place a flat washer over the bolts and connect the Locking Levers.



5. Connect the foot switch

Connect the Foot Switch to the table by inserting the cable into the socket. Position the foot switch on a flat, stable surface.



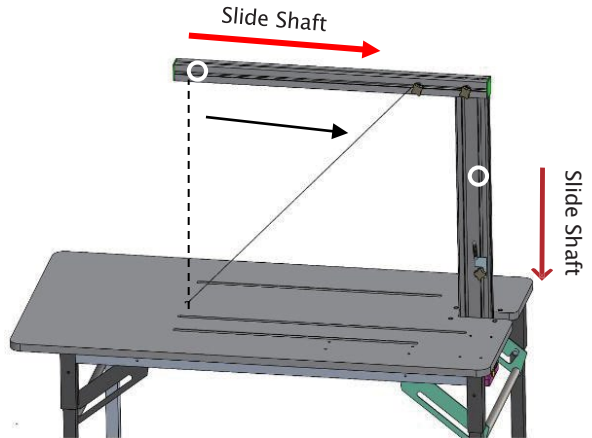
Product Operation

1. General Operation

Turn the Power Switch to the ON position. Press the foot pedal to heat the wire and begin cutting. Use the Guide Ruler to ensure straight cuts when needed.

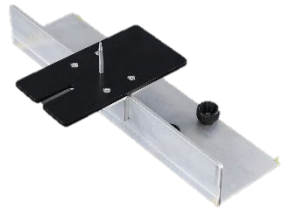
2. Cutting Angles

The Hot Wire on the TapeTech EHWTABLE60 can adjust between 0° and 45°. To adjust the angle of the wire from the default 0° “straight” cut, loosen the knob of Hot Wire Shaft 3 and slide the shaft toward the back of the table until you reach the desired angle. Now loosen the knob at Hot Wire Shaft 1 and pull the shaft down to tighten the wire. Turn the knob to set the position.



Available Attachments (sold separately) EHCIRCLE60 - Circle Cutting Attachment

To cut circles and cylinders quickly and accurately, use the TapeTech EHCIRCLE60 Circle Cutting Adapter.



Technical Specifications:

Model	EHWTABLE60
Voltage	100-240V
Weight	44 pounds (20kg)
Power	MAX. 150W
Cutting temperature	1022°F (550°C)
Replacement Hot Wire	EHW160
Cutting Height Range	13.8" – 21" (35cm – 55cm)
Table Dimensions	24" x 48" (120cm x 60cm)