



WOOLCUT™18

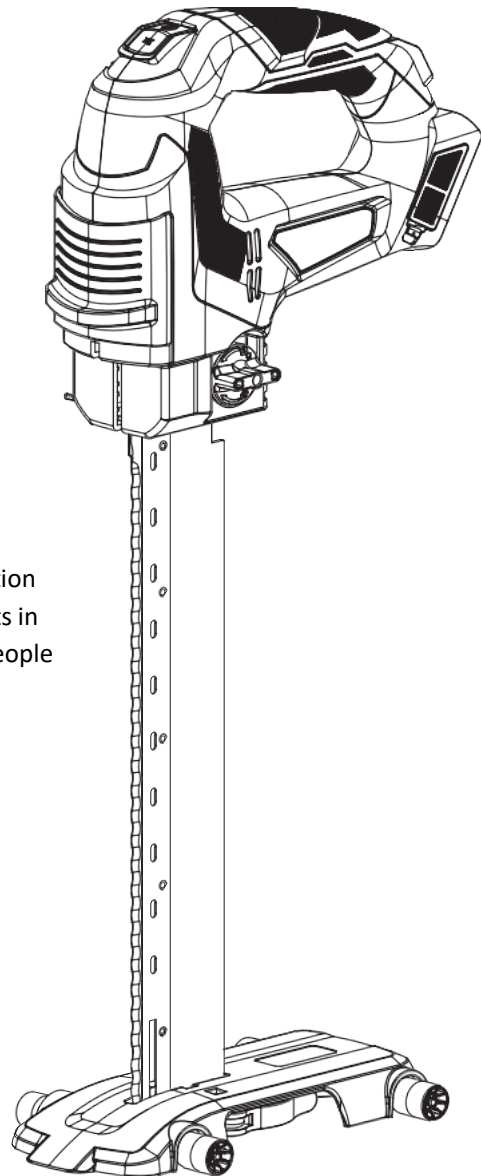
Insulation Cutting Saw

User Manual

For biobased and mineral insulation materials



- Please read these instructions carefully before operation
- Take special note of the guidelines and safety prompts in these instructions to avoid injury to yourself, other people and objects, or damage to the tool.



General Safety

Please read all instructions and safety advisories. Failure to follow the instructions and advice can lead to electric shock, and/or serious injuries. Please save this document for future reference.

1. Workplace Safety

- a) Ensure the workspace is clean and well-lit. Poorly lit and messy, or cluttered, workspaces can lead to accidents.
- b) Do not operate the Insulation Cutter in areas with flammable liquids, gases or dust. Depending on the material being cut, the vibrating wire can create sparks which can ignite the liquid, vapors or dust.
- c) Keep children and other persons away while operating the tool. Distractions can result in loss of control and accidents.
- d) Store the tool in a secure place when not in use. Do not allow persons not familiar with the tool, or persons who have not read this manual, to operate the tool.

2. Electric Safety

- a) Avoid contact with grounded surfaces like pipes, heaters, cookers and refrigerators. If your body is grounded, an increased risk of electric shock exists.
- b) Do not operate the Insulation Cutter in rain or high humidity areas. Water entering the Power Head would increase the risk of electric shock.
- c) Do not operate the tool if the power switch is not operating properly. Replace the switch immediately.
- d) Remove the battery before adjusting the tool, changing the cutting wire or storing the tool. This precaution prevents the inadvertent activation of the Insulation Cutter.

3. Personal Safety

- a) Stay alert when operating the Insulation Cutter.
- b) Avoid inadvertent activation of the Insulation Cutter. Be sure that the switch is turned off before connecting the battery to the tool.
- c) Remove and safely store wrenches, screwdrivers and other adjusting tools before turning on the Insulation Cutter.
- d) Wear appropriate clothing. Do not wear baggy or loose clothing or jewelry. Avoid placing your hair, clothes or gloves close to the vibrating wire during operation. Clothing, hair and jewelry can be caught up in the moving parts.
- e) Be sure that any dust collection devices are properly connected and used correctly.
- f) Wear appropriate personal protection equipment based on the material being cut.

4. Use and Handling of Battery-Powered Tools

- a) Recharge the batteries provided with the Insulation Cutter using ONLY battery chargers approved by the manufacturer. Using unapproved chargers presents a risk of fire.
- b) Use ONLY the batteries provided with the Insulation Cutter, other approved TapeTech batteries, or other approved batteries in conjunction with an approved battery adapter. Failure to comply may lead to fire and/or injury.
- c) When the battery is not in use, keep it away from paper clips, coins, nails, screws and other small, metallic objects that could cause the battery contacts to connect. If the battery contacts short circuit, it may lead to burns or fire.
- d) If used incorrectly, or if damaged, fluid may emerge from the battery. Avoid contact with that fluid. In the case of accidental contact with the body, promptly rinse the area thoroughly with water. If the battery fluid comes in contact with the eyes, immediately seek medical attention. Battery fluid can lead to irritation or burns of the skin. Check that any fluid that leaked did not coat adjacent parts of the tool. If this occurred, clean or replace the parts, as needed.
- e) Do not open the batteries as this can lead to the risk of a short circuit.
- f) If the battery becomes damaged, vapors may emerge from the battery. These vapors can lead to irritation of the respiratory system. Get fresh air immediately and seek further medical attention if symptoms persist.

5. Insulation Cutter Safety

- a) Do not overload the tool during use. Move the blade through the material at an appropriate speed based on density and thickness. Overloading the tool can cause the blades to jam. If this occurs, immediately turn off the power switch.
- b) Do not lean too far. Keep a firm footing and good balance during operation of the tool.
- c) Check that the blade holder and blades are correctly installed before operation. Be sure the blades are sharp and clean. Properly maintained blades are less likely to jam or overload the tool.
- d) Keep handles and gripping surfaces dry, clean and free from oil or grease. Slippery surfaces make it difficult to operate safely.

6. Maintenance and Service

- a) Use ONLY original replacement parts when servicing the tool. Any maintenance should be performed by qualified personnel.

Intended Use

WOOLCUT™18 is designed for cutting various flexible and compressed building insulation materials, including natural fibers such as Wood or Hemp Fiber, Mineral Wools like RockWool or Glass Wool, and insulation materials made of PUR/PIR (rigid polyurethane foam), polystyrene, sponge, etc.

Specifications

TOOL SPECIFICATIONS				
Stroke Length	1.2" (30mm)		Motor	18V DC Brushless
No-load Stroke Rate	2,800 strokes/minute		Battery	18V 2.0 Ah
Cutting Angle	45° - 90°		Weight (w/o battery)	4.4 lbs (2kg)
Max. Cutting Depth	9.4" (240mm) or 13.8" (350mm)			
BATTERY			CHARGER	
Rated Voltage	18V		Input Voltage	100-240V AC/50-60 Hz
Capacity	4.0 Ah Lilon		Output Voltage	21V
Weight	1.28 lbs (0.58kg)		Output Current	2.3 Amps
Features: Power Display			Weight	0.57 lbs (0.26kg)
Includes: Overload Protection			Charging Time	60 minutes

Blade Recommendations Based on Type of Material and Density

INSULATION MATERIAL	DENSITY (kg/m ³)	RECOMMENDED SAW BLADE
Flexible natural fiber	< 90	Wave shaped saw blade
Flexible mineral wool	< 100	Wave shaped saw blade
Compressed mineral wool	100-170	Serrated saw blade
Polyurethane PUR/PIR	< 36	Serrated saw blade
Polystyrene EPS/XPS	< 45	Serrated saw blade

Charging the Battery

Note: The battery is partially charged on delivery

To ensure full battery capacity, charge the battery in the charger before the first use. Pay attention to the charge indicator on the charger; the red light indicates the battery is charging. The green light indicates the battery is fully charged. The Lilon battery can be recharged at any time without affecting the overall life of the battery. Interrupting the charging process – or partially charging the battery – does not damage the battery.

The battery is equipped with a temperature monitoring system that only allows for charging between 32° F and 113° F (0° C and 45° C)

Removing the Battery

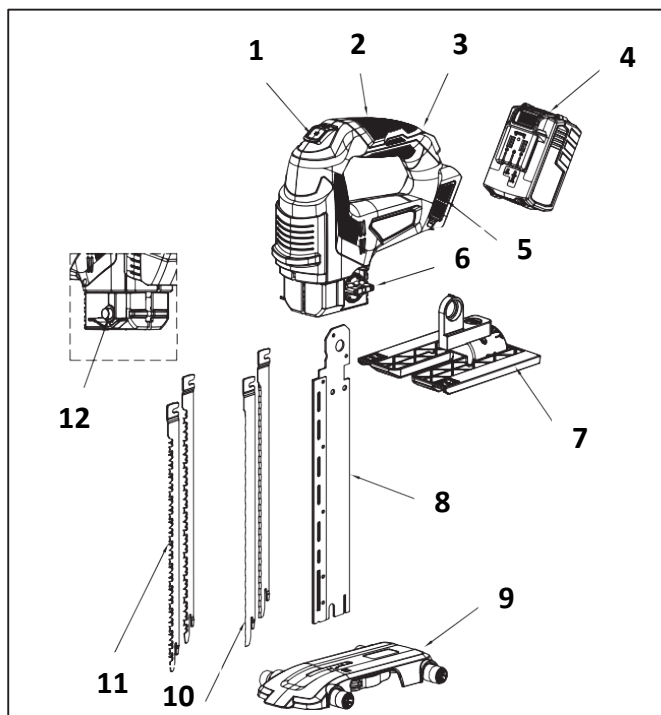
The battery is equipped with a locking mechanism. As long as the battery remains inside the power head of the vibrating wire insulation cutter, it is held in position by a spring. To remove the battery, press the gray button and slide the battery off the power head. Do not use excessive force.

Notices Regarding Optimal Handling of the Battery

Keep the battery away from water or damp conditions. Store the battery at temperatures between 32°F and 113°F (0° – 45°C). Do not leave batteries in vehicles during periods of extreme heat or cold.

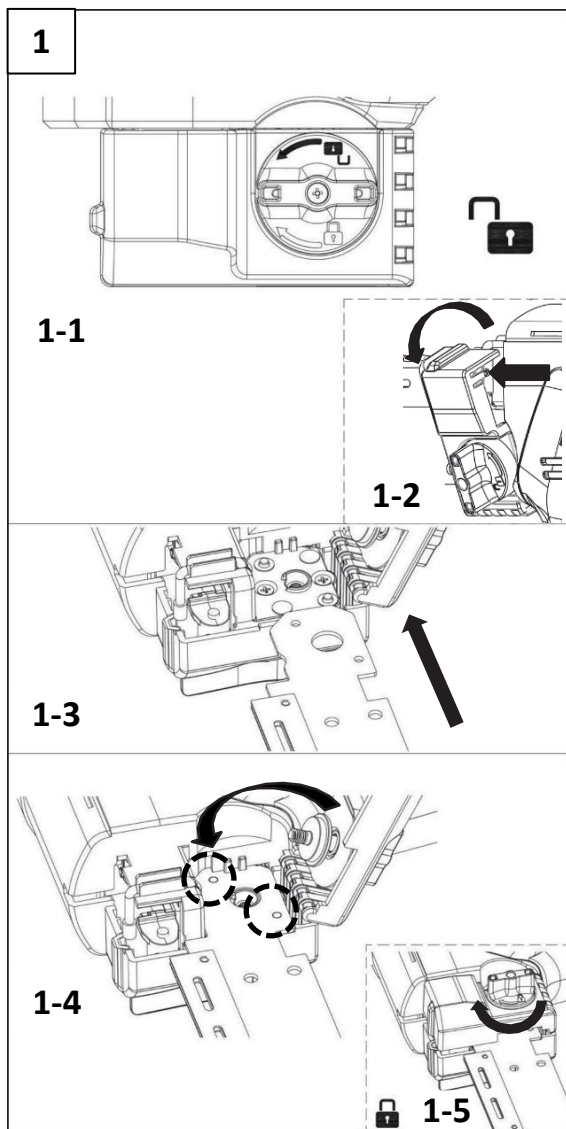
If the battery begins to operate for shorter and shorter periods of time following a recharge, the battery life is exhausted and the battery should be replaced.

Key Components



1. Upper Power Switch
2. Main body
3. Lower Power Switch
4. Battery
5. Dust filter cover x 2 pcs
6. Locking knob for blade holder
7. Adjustable Cutting Guide
8. Blade holder (9.4" / 13.8") (240mm/350mm)
9. Rolling Base
10. Wavy Saw Blade x 2 pcs (9.4" / 13.8") (240mm/350mm)
11. Serrated Saw Blade x 2 pcs (9.4" / 13.8") (240mm/350mm)
12. Blade Lock Button

1. Attaching the Blade Holder



1-1. Turn the locking knob 5-8 turns, counterclockwise, to open the cover of the blade holder area.

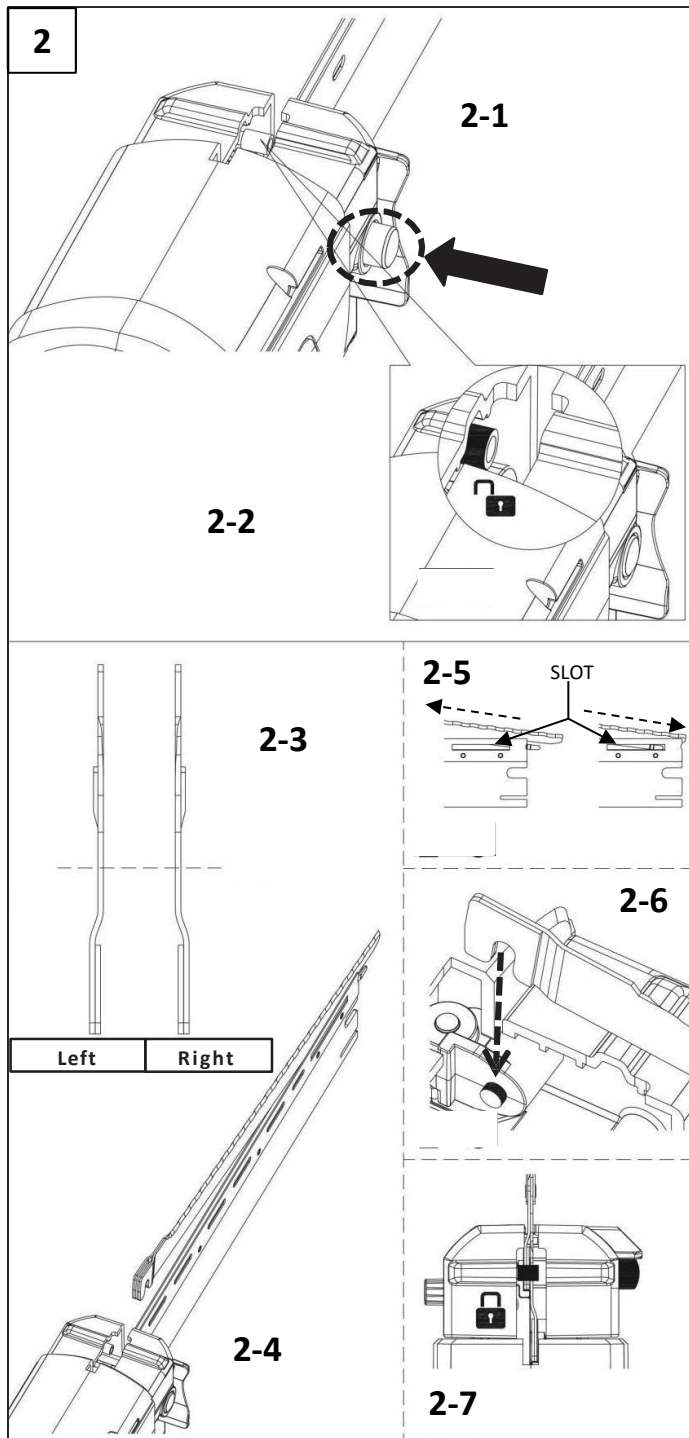
1-2. Lift the cover in the direction of the arrow. If necessary, press on the cover to release the inner latch and facilitate the opening.

1-3. Install the Blade Holder as shown.

1-4. Align the Blade Holder with the two pins.

1-5. Close the cover and tighten the knob to secure the Blade Holder in position.

2. Blade Installation and Removal



2-1. Hold the body of the tool, as shown, and press the Blade Lock Button with your thumb.

2-2. The Blade Lock Pin retracts as shown. The tool is now ready to install or remove cutting blades.

2-3. To install the blades, first be sure the blades are in the correct orientation. The left and right blades are not identical. Install one blade, and then the other.

2-4. Holding the blade at a slight angle, with the notch in the blade elevated, insert the lower end of the blade into the groove in the Blade Holder.

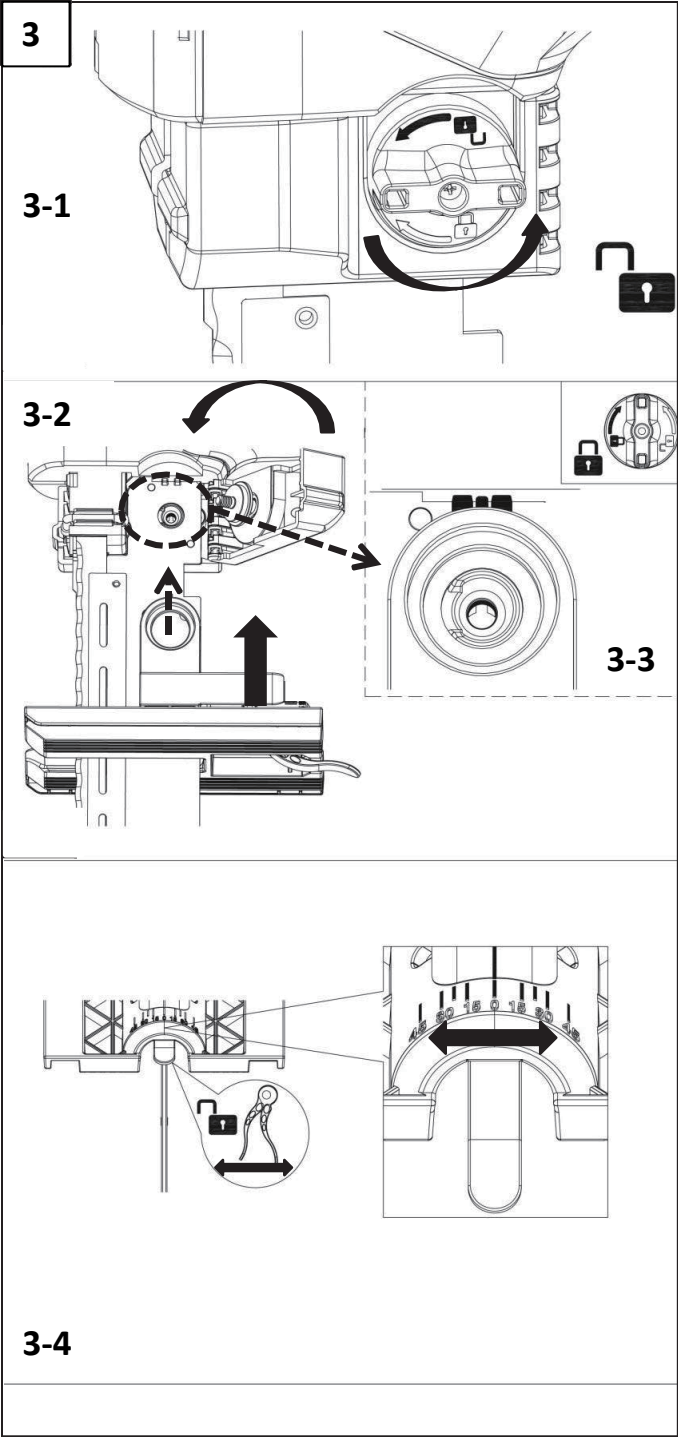
2-5. Keeping the blade in the groove, slowly pull the blade toward the tool until the tension clip can be inserted into the slot on the side of the Blade Holder.

2-6. Clip the other end of the blade onto the lug protruding from the reciprocating rod.

2-7. Release the locking Button on the saw support after installing the two blades.

To remove the blades, reverse the above process.

3. Install the Adjustable Cutting Guide



3-1. Turn the locking knob 5-8 turns, counterclockwise, to open the cover of the blade holder area.

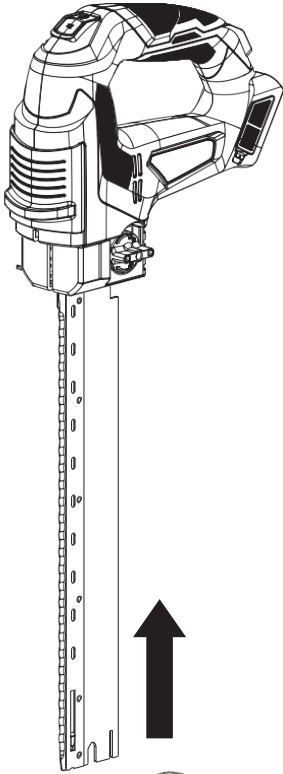
3-2. Align the Cutting Guide with the arbor in the center.

3-3. Close the cover and tighten the locking knob.

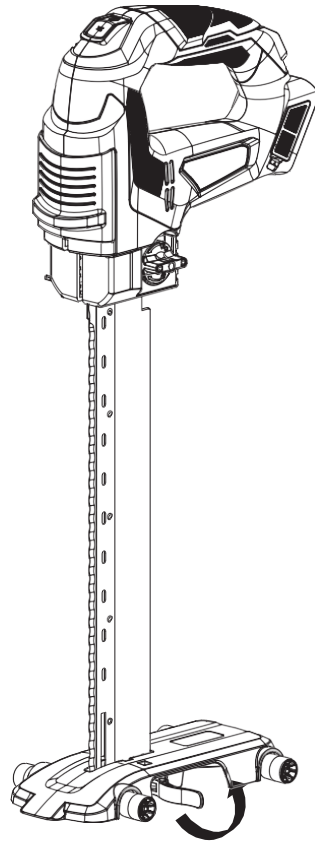
3-4. Adjust the cutting guide angle, as needed, by releasing the quick-release lever. Lock the lever back in place once the desired angle is set.

4. Install the Rolling Base

4



4-1

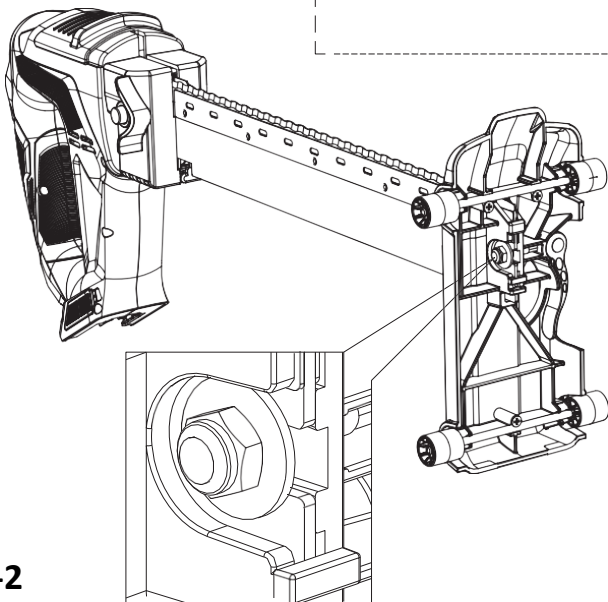


4-3

4-1. Release the quick-release lever and insert the bottom of the Blade Holder into the slot in the Rolling Base.

4-2. Check that the Blade Holder is properly seated in the Rolling Base, as shown.

4-3. Lock the quick-release lever in place.



4-2

Inspection, Repairs, and Environmental Protection

DAILY INSPECTION:

- Ensure the body or the tool and the handle are not damaged.
- If the battery charger or battery are damaged, please stop using them immediately and replace the defective/damaged product.
- Ensure that the Power Switch operates smoothly.
- Ensure that the blades operate freely and do not jam.
- For tools that have been stored for a long time (or before use), check to ensure that all fasteners and connections are tight.

REPAIRS:

- Repairs should be made ONLY by properly trained persons.

ENVIRONMENTAL PROTECTION

Please observe national laws and regulations concerning the environmental treatment and recycling of discarded tools and equipment, packaging and accessories. Please render discarded power tools unusable by removing the battery pack and disposing of or recycling properly.

Do not dispose of batteries in household waste. Do not throw batteries into water or fire. Batteries should be collected and recycled, or disposed of, in an environmentally-friendly collection and sorting center provided by your local municipality.

Parts and Accessories

Part #	Description
WC18-BH9.4	9.4" (240mm) Blade Holder Assembly for WoolCut18
WC18-Wavy9.4	9.4" (240mm) Wavy Blade Set for WoolCut18
WC18-Serrated9.4	9.4" (240mm) Serrated Blade Set for WoolCut18
WC18-BH13.8	13.8" (350mm) Blade Holder Assembly for WoolCut18
WC18-Wavy13.8	13.8" (350mm) Wavy Blade Set for WoolCut18
WC18-Serrated13.8	13.8" (350mm) Serrated Blade Set for WoolCut18
EBAT1820	18V/2.0Ah Battery
EBAT1850	18V/5.0Ah Battery
EBAT1880	18V/8.0Ah Battery